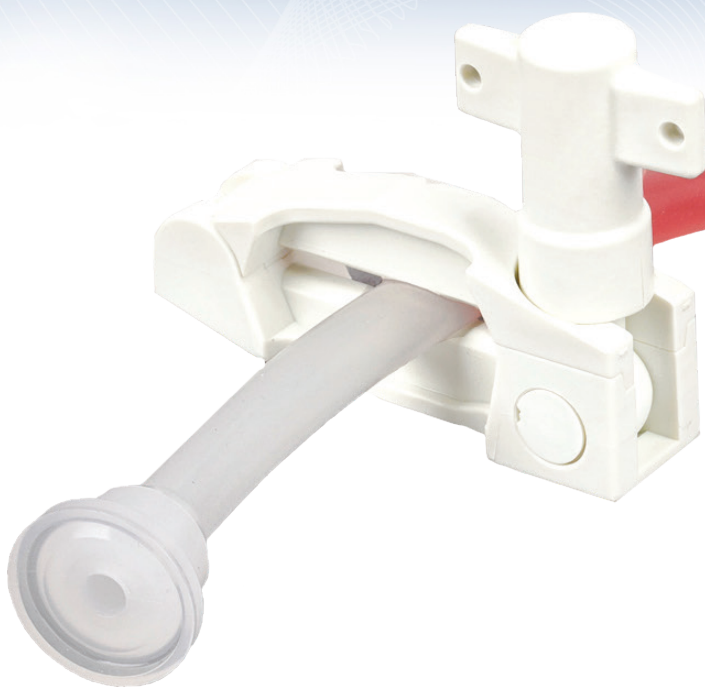


TBL

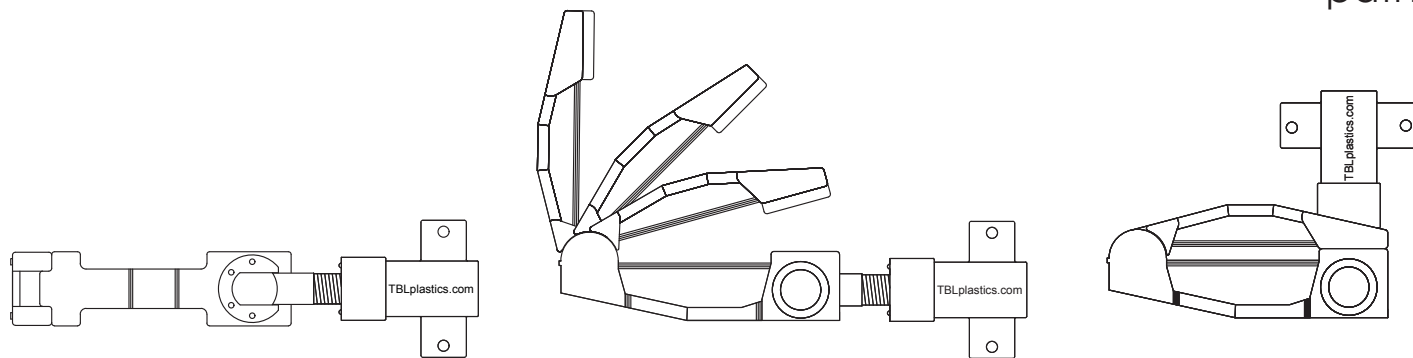
Bio-Ease⁺™ HD

Tubing Clamp



The Superior Non- Metallic Clamp

The **Bio-Ease™ HD Clamp** has been designed for critical fluid applications within the Biotechnology and Pharmaceutical industries. With the quick swing-away lock nut, it provides for user-friendly operation. It may be installed on existing tube assemblies without disrupting the process fluid path.



TBL

Bio-Ease⁺™ HD

Tubing Clamp

Key Features:

- Lightweight and Reusable
- Autoclavable to 135° C
- Gamma Stable to 50 kGy
- USP Class VI <88>
- 90° Swing-Away Lock Nut
- Universal Locking Jaws
- Validated Design
- Lot Traceability

Benefits:

- User Friendly
- HD Design Allows Use With Wide Range of Materials and Tubing Sizes
- Ideal for Single-Use Systems
- Quick Release from Locked Position
- Friction Lock Screw Feature

Specifications:

- Tubing Size Range: 0.187" ID to 0.500" ID
- Wall Thickness 0.085" - 0.200"
- Tubing Types: Silicone, TPE TPV, PVC, and Rubbers
- Maximum Hardness (Tubing): 70 Shore A
- Material: Zytel® Nylon 66 with 33% Glass Fill

